



INNOVATIVE ICT
BUILDING A BETTER CONNECTED WORLD



A Better Connected Railway

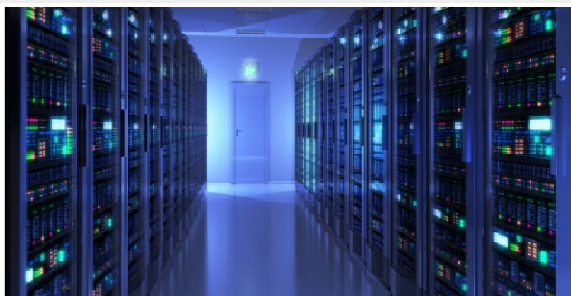
Marc Poujet
Huawei Transport Solutions



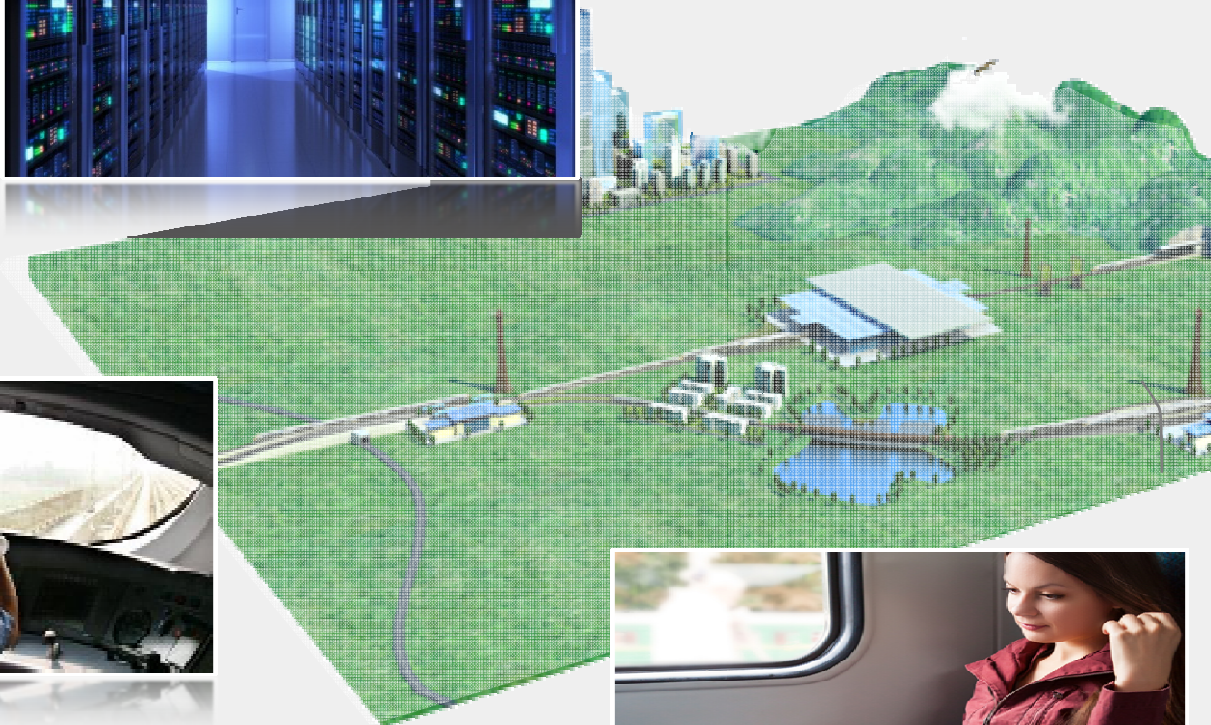
Rail Technical Innovation : the only way towards A Better Connected Railway



Huawei Innovative Rail ICT solution shapes a better connected Railway HUAWEI



Fusion OCC



Agile station

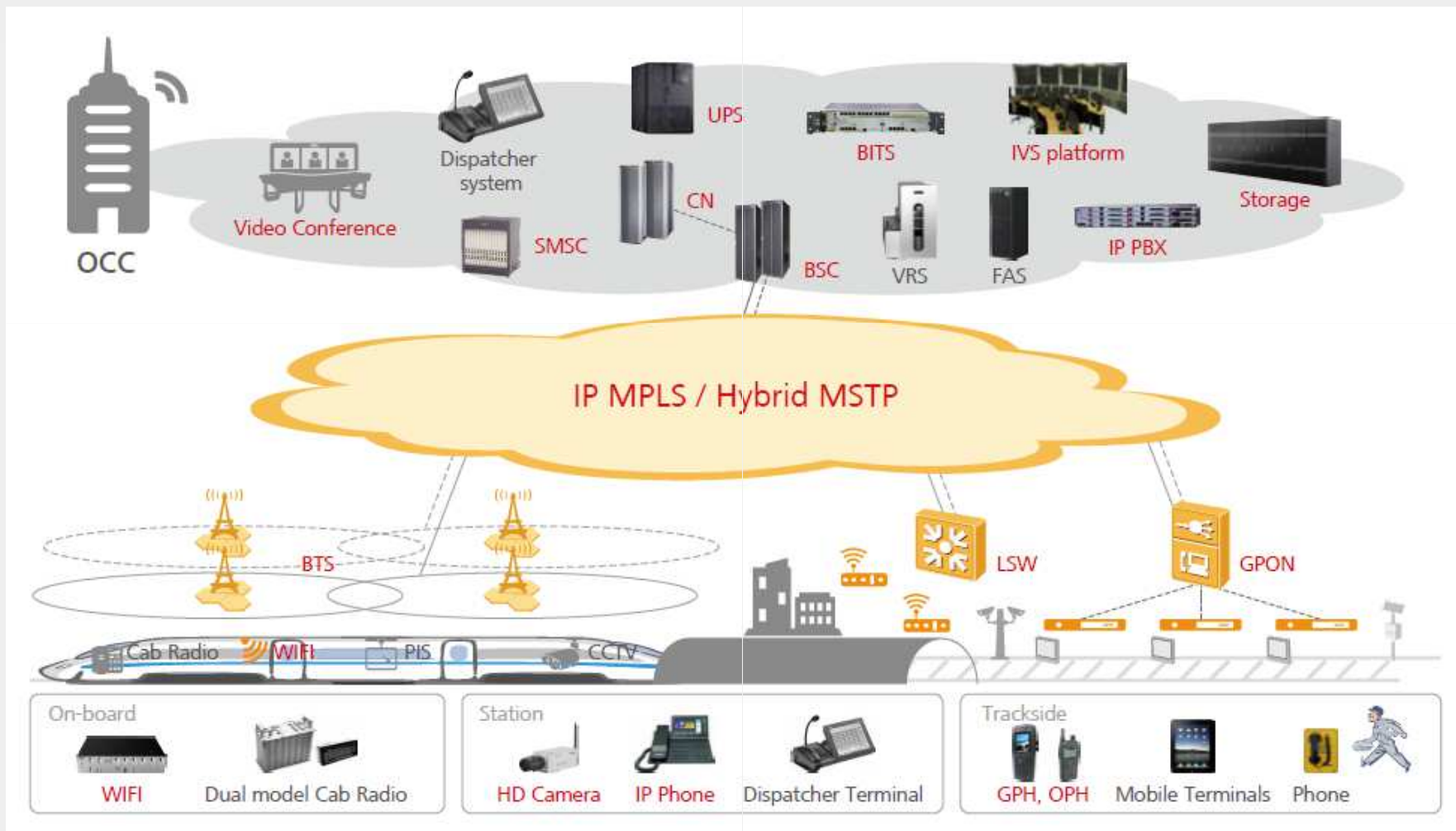


Future-oriented rail operational communication

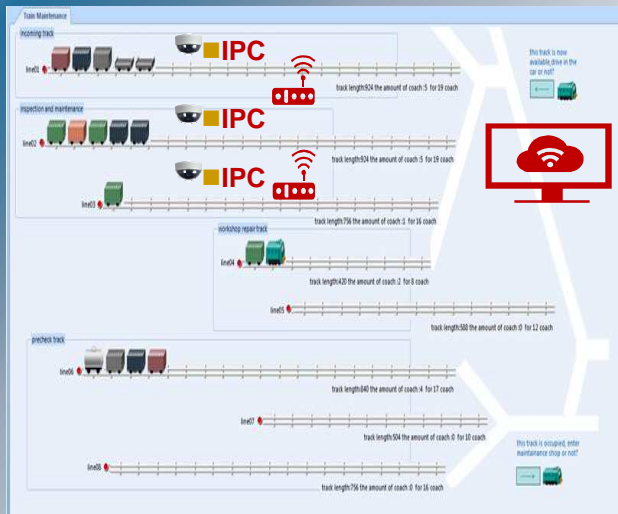


Digital Train

Huawei Digital Railway Operational Communication Solution



Agile station : visualization automation and Intelligent Infrastructure management



- Visualized management
- reduce maintenance cycle by 20%



- Converged ICT and OT
- Optimize maintenance scheduling

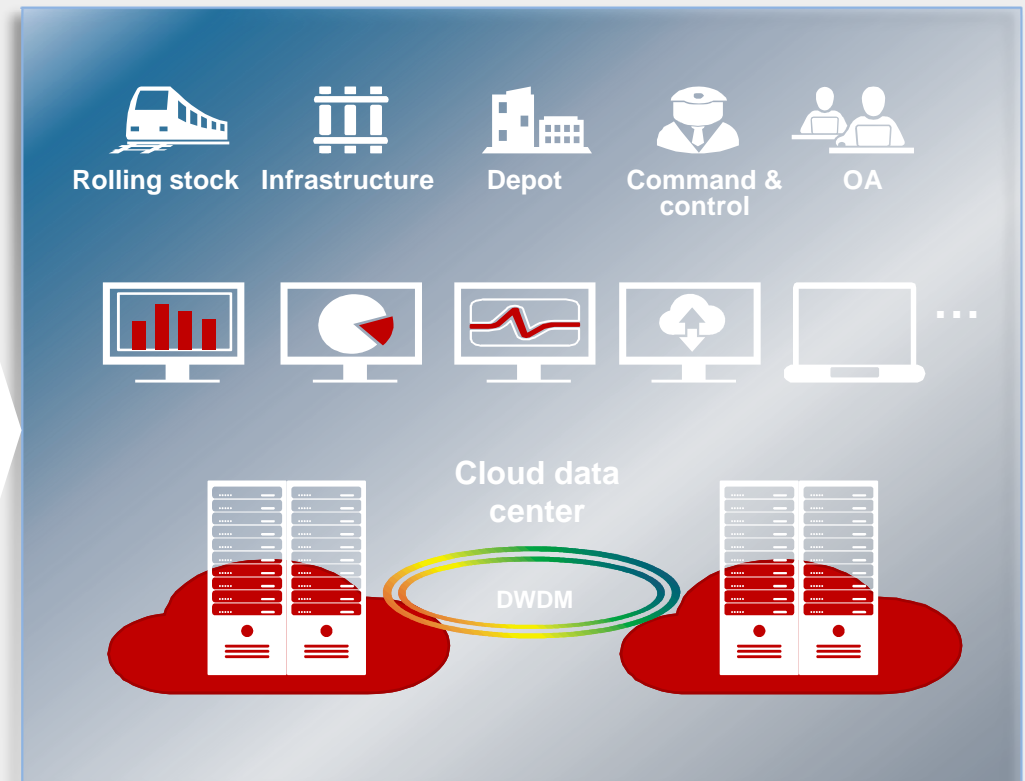


- Mobile working
- 3m LBS accuracy
- Real-time data acquisition, improve efficiency

Fusion OCC : the hub of Rail information management



- Information Isolated
- Inefficient network infrastructure
- Difficult business expansion



- Dual-activation DC
- Performance improvement: 200%
- Resilient intermodal platform

Digital train : seamless journey and intermodal



Live news or sports program



TCMS on-line



Business & entertainment online



Real-time video surveillance on board

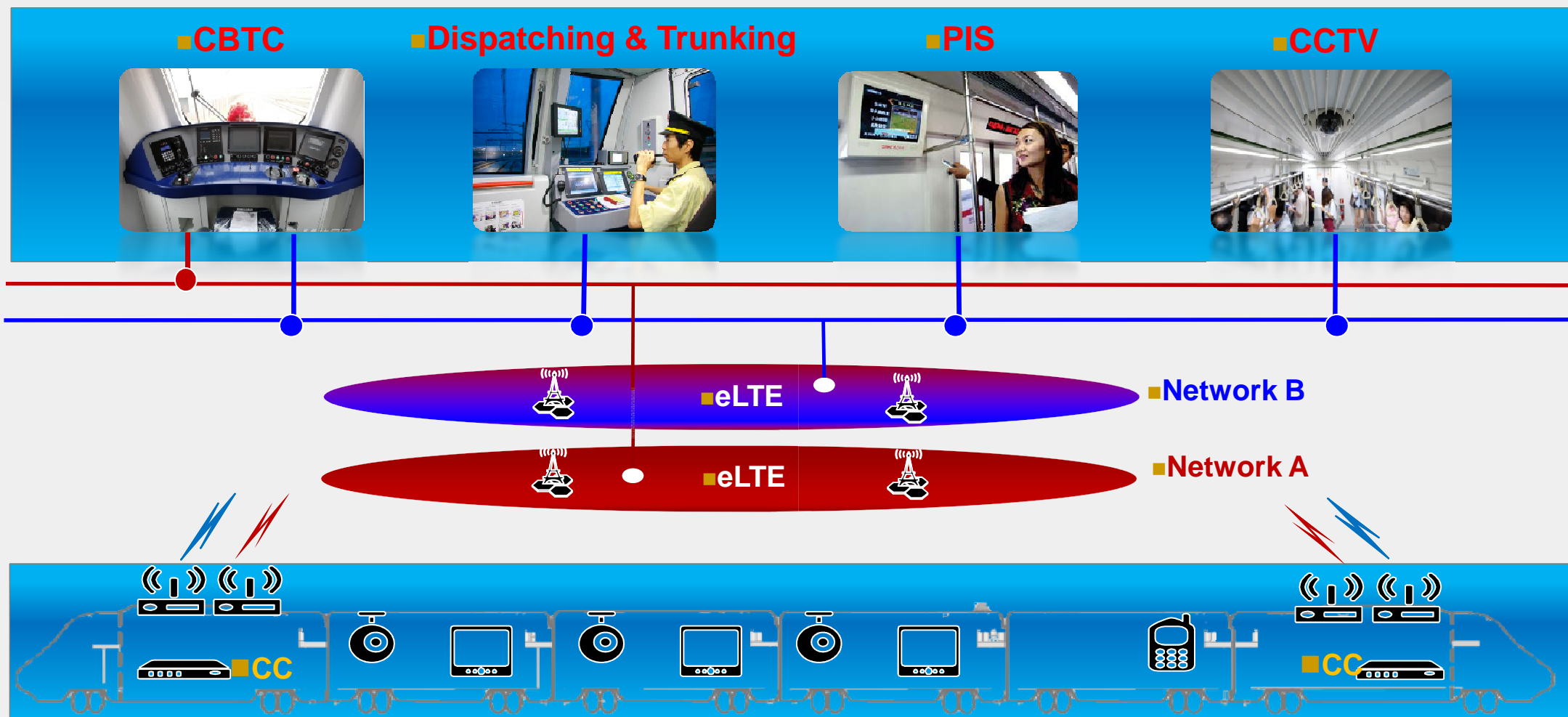


- 4G T2G communication
> 100Mbps@431km

- Unified gateway (AR)
support 4 in 1, support
WiFi/UMTS/LTE access

- WDS and High-density
WiFi on board coverage

Huawei eLTE Solution Overview for Mass Transit

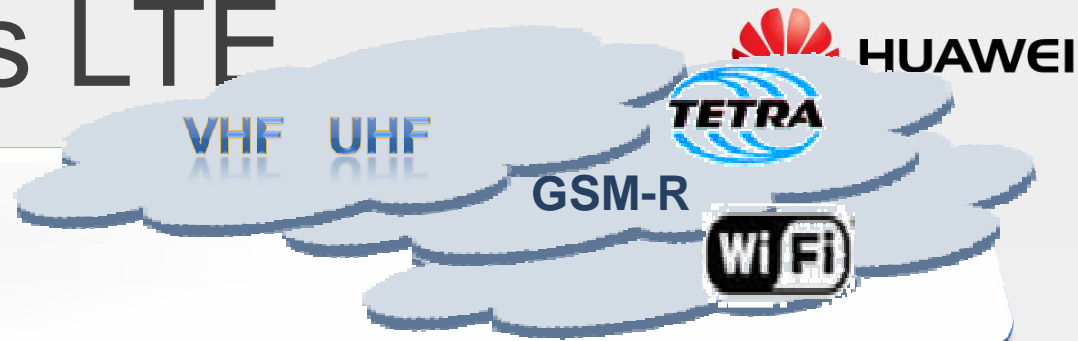


- Dual network in redundancy for high reliability, one network for multi services to simplify the network.

Mission Critical goes LTE

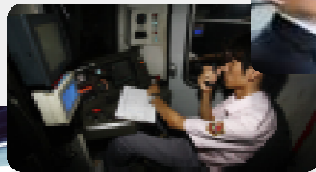
the 90's

- Physical separation of services
- Multiple skills
- Exponential OPEX



today

- More bits per MHz
- abundant data bandwidth
- Easy to operate
- Enable commercial synergies

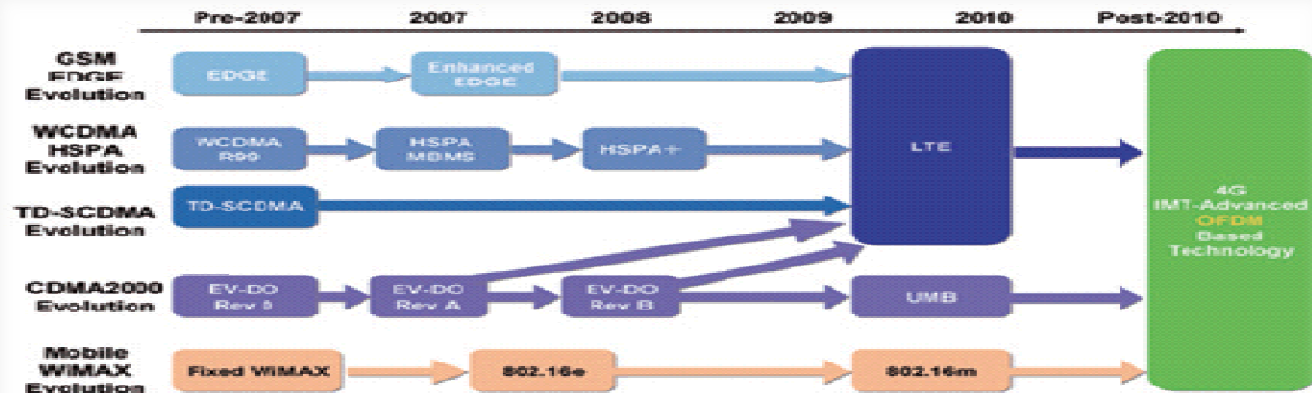


PIS

Dispatch



Asset Management



Several partners to develop innovative solutions



C/LTE pilot with
Alstom (France)

LTE demo with
Bombardier (Poland)

DB GSM-R lab (Germany)
Munich Industry Solution Open Lab
(Germany)

Cooperation with Siemens CVC
GSM-R lab in Croatia

GSM-R/LTE lab with
Selex (Italy)

ALSTOM



BOMBARDIER

SIEMENS



funkwerk
traffic & control communication



THALES



BOSCH

Neusoft

CREEG-Huawei Joint
Innovation Centers

Suzhou Industry
Solution Open Lab

SMRT-Huawei Joint
Innovation Centers

Huawei Operational Communication Solution's New Highlighted Achievements



5 of the World's Top 10 Railway



Germany DB

➤ GSM-R Swap



Spain Adif

➤ IP/SDH of
newly build HSR



Turkey TCDD

➤ GSM-R/SDH of newly
build HSR



Morocco ONCF

➤ GSM-R/SDH of
newly build HSR

Morocco country wide GSM-R coverage



Overview

- Contract awarded in 2014
- End customer = ONCF (Moroccan State Railways Operator)
- Consortium: Huawei/IMET/Thales (consortium leader)
- Scope of supply : GSM-R network + SDH network
- 1,923 km, including the high-speed ETCS2 line between Tangiers and Kénitra (185 km)



Huawei Solution

- BTS in double coverage for high-speed line, single coverage elsewhere
- Distributed BTS for coverage of tunnels
- 3 BSC sites, with geographic hot standby backup mechanism
- Geo redundant Release 4 Core network



Germany GSM-R BSS modernization



Overview

- End customer: Deutsche Bahn AG (German Railways)
- Replacement of KCC BTS for North region, approx. 12,000 km to be covered
- Project completion expected in 2024

Huawei Solution

- 1250 x BTS3900 (LTE ready) with highly customized outdoor cabinet + 17 BSCs
- GSM-R Solution is compliant to EU Directive 2008/57/EC, as certified by TÜV Rheinland and NoBo LuxControl (Sept. 2014)
- IOT and integration to DB's Release 4 core network will be performed
- Migration to be performed during ongoing rail operation
- Option to expand to mobile broadband services, including 4G (LTE)

Tuesday, July 14, 2015

DB selects Siemens-Huawei for GSM-R upgrade

Written by Kevin Smith

[Tweet](#) [1](#) [Share](#) [8+1](#) [Share](#)



GERMAN Rail (DB) has selected a consortium of Siemens Convergence Creators and Huawei to perform a migration of DB's first-generation GSM-R network in northern Germany.

The rollout comprises the replacement of existing GSM-R base stations with Huawei GSM-R components, and covers 12,000km, or 40% of DB's network. The new network is compliant with Eirene GSM-R and ETCS level 2/ERTMS standards, and the contract includes the option to expand the network to mobile broadband services, including 4G Long Term Evolution (LTE).

As part of the migration process, Huawei's GSM-R radio infrastructure will be integrated into DB's existing switching centre. The consortium says that "substantial measurements" have been performed to make sure that Huawei's GSM-R components are interoperable with the existing network.




IRJ
International Railway Journal

© International Railway Journal



Current eLTE rollout for urban rail Projects in China



 Zhengzhou metro line 1 Zhengzhou metro line 2	 Changchun metro line 1
 Shenzhen metro line 11	 Beijing metro Yan-Fang line
 Changsha metro line 1	 Chongqing metro line 10
 Lanzhou metro line 1	 Wenzhou metro line S1
 Shijiazhuang metro line 1&3	 Hangzhou metro line 4
 Xiamen metro line 1	 Urumqi metro line 1



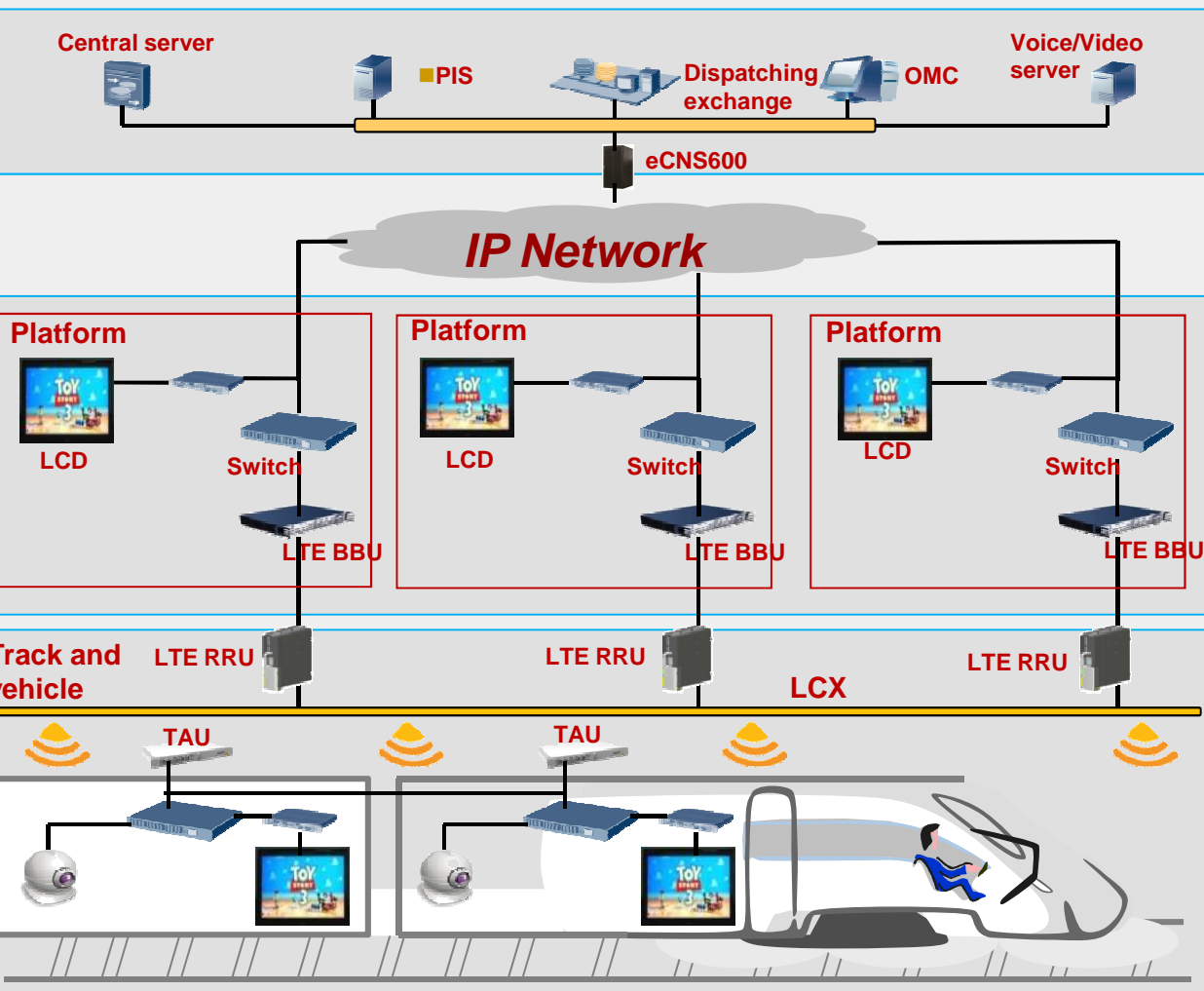
World's first commercial LTE network for rail industry



ShuoHuang Railway

- capacity increase requirement
350 million Ton/Year
- Multi-locomotive synchronization
- Wireless video-surveillance
- Train dispatching based on voice trunking
- In operation since Dec. 2014

Innovation: Smart 4G eLTE Network for Zhengzhou Metro



Solution

- Mass transit **TD-LTE solution**: high-quality, train-ground broadband communications.
- Bidirectional communications services over entire **26 km** of Zhengzhou Metro Line 1.
- **QoS guarantee** mechanism: PIS and video surveillance data in train compartments
- In **passenger operation** since **Dec. 2013**



World's 1st eLTE Application in Light Rail HUAWEI



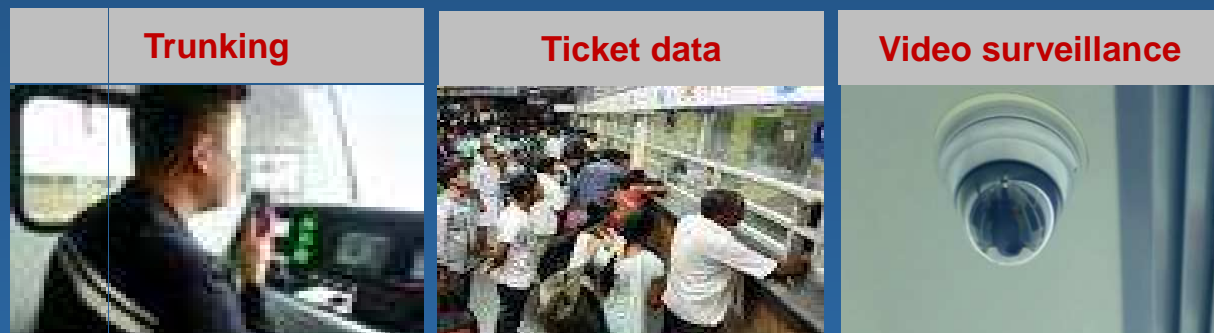
- Addis Ababa light rail phase one, **31.3km**, includes east – west and north-south lines, **44 stations**, 13 viaduct stations, 1 underground station.
- Design speed **70km/h**, train access units mounted both in front and rail of train.
- Continuous coverage for the entire rail.

Light Rail - Ethiopia

9 Radio Units for around a **30km** line

One network for trunking, ticket data transmission and video surveillance.

Contract award June 2014



THANK YOU



Huawei GSM-R/CCTV/SDH projects in Turkey (2012-2015)



Alsancak-Cumaovas

ETCS L2

51 km, 1 tunnel

Macro BTS and Distributed BTS

Full SDH Network

Mobile GSM-R terminals

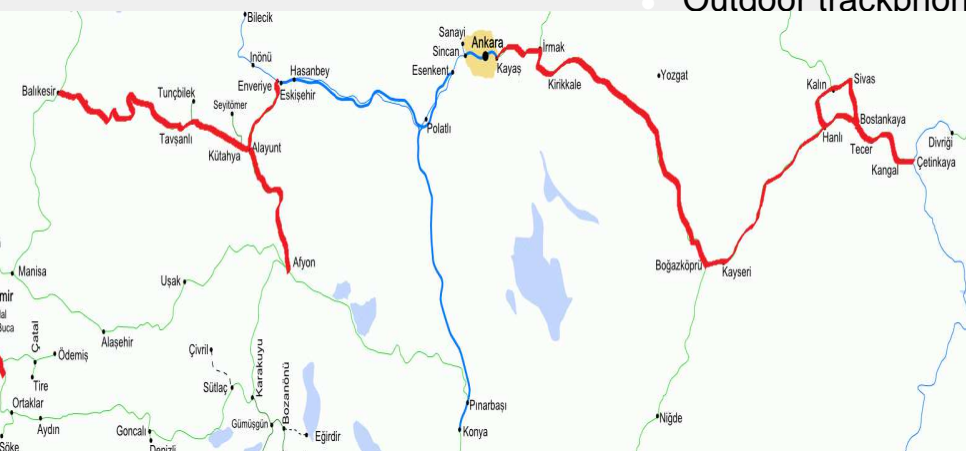
Signalling vendor **Thales**

Eskisehir-Kutahya-Balikesir

- ETCS L2
- 467 km, 42 tunnels
- Macro BTS and Distributed BTS
- Full SDH Network
- Mobile and fixed GSM-R terminals
- Signalling vendor **Alstom**
- Outdoor trackphones and PBX

Kayas-Kayseri

- ETCS L2 ready
- 366 km, 23 tunnels
- Macro BTS and Distributed BTS
- Full SDH Network
- Mobile and fixed GSM-R terminals
- No signalling vendor yet



Ankara-Eskisehir

- Contract with **Savronik**
- 1st video surveillance system for high speed trains in Turkey
- CCTV (335 cameras), DWDM, data-center
- Project in operation since 2.5 year

Kayseri Sivas

Çetinkaya

- ETCS L2 ready
- 372 km, 13 tunnels
- Macro BTS and Distributed BTS
- Full SDH Network
- No signalling vendor yet

■ GSM-R Core Network Release 99 Vendor: Nokia

Comprehensive international certifications confirming compliance with Railway standards



European Industry Certification



Lloyd's

RINA

TÜV

Third-Party integration report



Interoperability Test and Certification